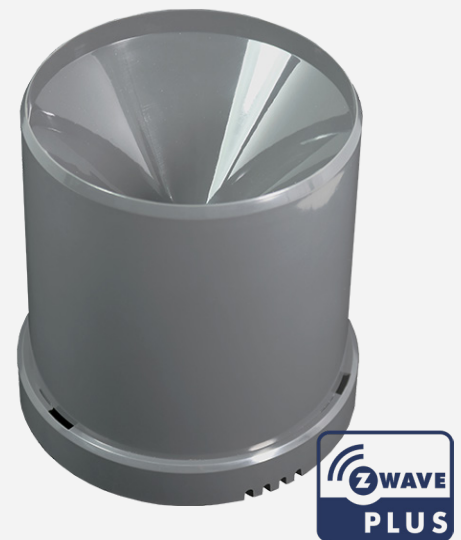


DATA SHEET POPP Z-RAIN

(700168)

For its smart home products POPP trusts Z-Wave technology. Z-Wave is the international leading standard for wireless communication between intelligent devices in homes and offices and thereby the basis for successful home automation.



Specifications:

- Rain sensor
- Measures volume of rainfall in mm/h
- Longer battery life through optimised energy management
- Scope of Delivery: 1x Z-Rain, 2x AAA batteries (alkaline)

Article Dimensions (WxHxL):	132 x 132 x 139 mm
Package Dimensions (WxHxL):	140 x 140 x 152 mm
Article net weight:	0.240 Kg
Article gross weight:	0.335 Kg
EAN:	4251295700168



DATA SHEET POPP Z-RAIN

(700168)

Device Type:	Multilevel-Sensor (Sleeping slave)
Transmission protocol:	Z-Wave
Transmission frequency:	868,4 or 869,8 MHz EU
Z-Wave Plus:	yes
SmartStart:	no
Security:	no
Repeater:	no
Beaming:	no
Firmware Version:	1.01
Z-Wave Version:	4.05
Transmission range:	up to 30m
Certification-ID:	ZC10-17065642
Z-Wave Product-ID:	0x0154.0x0004.0x0011
Battery type:	2x LR3 AAA
Battery life:	up to 1 year
IP Class:	IP55
Operating temperature:	0 to 50°C
Humidity:	10 to 80%, no condensation
Storage temperature:	-10 to 50 °C